



3 Bedroom Triplex Penthouse – Elizabeth Tower

€2,019,950

Ref: UK.ETM.4801

Manchester, Manchester

Fabulous sky-high 3-bedroom triplex penthouse apartment—48th to the 50th floor—in the area of the city that's rising high. Elizabeth Tower at Crown Street is the latest development in Manchester's new skyscraper district combining elegant residential apartments and a central location that make it one of the most in-demand new places to live in Manchester. The iconic skyscraper at the heart of this exciting new city centre neighbourhood. Enjoy luxury communal facilities, including a state-of-the-art gymnasium, stunning Royal Gardens and the 44th floor swimming pool. Crown Street is a neighbourhood that forms part of an exciting new area in the south-western part of Manchester city centre, home to a cluster of new skyscrapers, one of which will become the tallest in the city. It will be su...

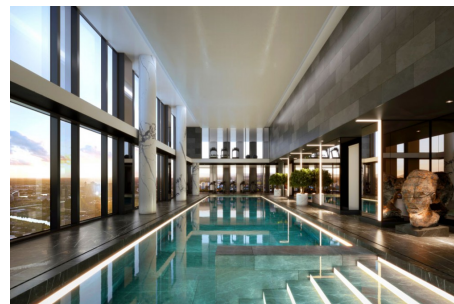
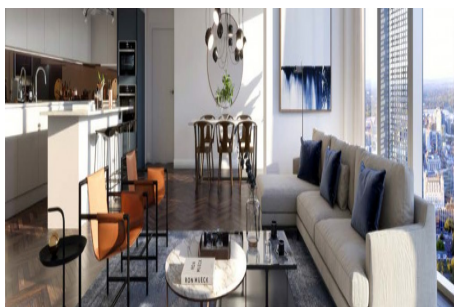
Telephone: +44 1902 875395

Email: info@global-broker.co.uk

Global Resorts & Developments Deansgate 62-70 Tettenhall Road
Wolverhampton WV1 4TH



Gallery



Telephone: +44 1902 875395

Email: info@global-broker.co.uk

Global Resorts & Developments Deansgate 62-70 Tettenhall Road
Wolverhampton WV1 4TH



Property Description

Location: Crown Street, Manchester, Manchester, Manchester, united-kingdom

Fabulous sky-high 3-bedroom triplex penthouse apartment—48th to the 50th floor—in the area of the city that's rising high.

Elizabeth Tower at Crown Street is the latest development in Manchester's new skyscraper district combining elegant residential apartments and a central location that make it one of the most in-demand new places to live in Manchester. The iconic skyscraper at the heart of this exciting new city centre neighbourhood.

Enjoy luxury communal facilities, including a state-of-the-art gymnasium, stunning Royal Gardens and the 44th floor swimming pool.

Crown Street is a neighbourhood that forms part of an exciting new area in the south-western part of Manchester city centre, home to a cluster of new skyscrapers, one of which will become the tallest in the city.

It will be surrounded by several public realm and green space areas, connected by several new pedestrian and cycle pathways. Podium level restaurants, coffee shops and retail outlets will establish Crown Street as one of Manchester's most exciting new leisure hotspots.

Features:

Breathtaking 44th-floor swimming pool | Enchanting 44th floor Royal Garden | Residents lounge | Podium-level retail space | Co-working space

Stunning apartments and luxury facilities will also make it one of the most desirable places to live.